



**GATEWAY
COMMUNITY COLLEGE**
A MARICOPA COMMUNITY COLLEGE

Gives

Welcome To GateWay!

One of the things that makes GateWay so special is that our employees truly care about our students' success. We are all about **STUDENT SUCCESS!** Our students come to us from different stages of their lives, and with a broad range of needs. But, collectively one of the ways we help make things a little easier for them is through **GateWay Gives**.

— The GateWay Gives Committee

GateWay Gives

WHAT is GateWay Gives?

Gateway Gives is our employee giving campaign. As you get to know our students, you'll understand that their needs go beyond what tuition covers. Your gifts help pay for emergency needs, like food, light rail passes and books. They also pay for scholarships, technology and vaccinations and equipment required for many of our trade and medical programs. You decide where you'd like your gift to go. And, by the way, **NO GIFT IS TOO SMALL** to make a difference! See the full list of scholarship and student support funds on page 4.

WHO does GateWay Gives benefit?

Gifts to GateWay Gives go entirely to our students. Your donations are deposited at the **Maricopa Community Colleges Foundation**, which is the 501(c)3 for the district. These gifts can be used to assist all students, regardless of citizenship, whether they are in a clock or credit program, or the financial aid eligibility of the program.

WHEN can I give?

You can give **NOW!** You don't have to wait for our annual spring campaign to benefit our students. Your gift today by payroll withdrawal will ensure that you are benefiting our students year-round.

WHY should I donate when I already "give" through my work at GateWay?

That's a great question. You are not giving to your employer; you are making a charitable gift to improve someone's future.

HOW can I give to our students?

To answer this question, let's join a virtual Math Class with professor Danny Vingochea:



What's the difference between the United Way campaign and GateWay Gives?

The **United Way** campaign benefits our community. Every dollar raised stays in Maricopa County, invested into breaking the cycle of poverty. The United Way campaign is on our campus in the fall.

GateWay Gives serves a mission to invest in GateWay students to make sure they are able to complete their education. Our GateWay Gives campaign is in the spring.

Meet The Members Of The GateWay Gives Committee



Anjelica Giardino

Development Officer

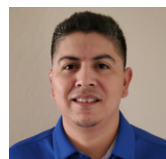
Why I Give: *"It's important to build our students up and show them that we care and we're invested in their education and future."*



Ann Blatte

Development Director

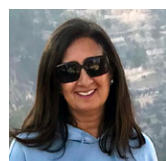
Why I Give: *"Because I have gotten to know many of our students and I want to invest in their success."*



Arnold Torres

Recruitment and Outreach Manager

Why I Give: *"Because my gift could be the difference of the student passing that state board or industry exam."*



Baljeet Gill

Polysomnography Tech Faculty

Why I Give: *"I give because it's rooted in my values to give or help those in need."*



Chris Mims

Communications Faculty

Why I Give: *"Because seeing my students out in the community and how the education we provide impacts critical services in our community."*



Danny Vingochea

Math Faculty

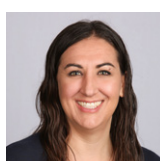
Why I Give: *"Because it gives me the chance to give back and repay the times people have assisted me throughout the years."*



Joseph Swaba

Communication/Storytelling Faculty

Why I Give: *"Because an investment in the success of our students rekindles my faith in the future of our community."*



Leah Smith-Thompson

Student Services Analyst

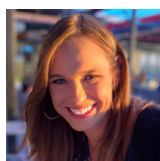
Why I Give: *"Because I have seen firsthand how even the smallest contribution can make a huge impact to a student."*



Leia Wilson

Student Services

Why I Give: *"I give so that maybe I can change the world for one student at a time."*



Lindsey Wilson

Interim PR Marketing Manager

Why I Give: *"Giving makes education more accessible, changing one life can make all the difference."*



Gary Marabella

Student Services Analyst Sr.

Why I Give: *"My support will help students achieve their goals and make a positive impact towards their success."*



Michael Tapscott

Senior Instructor Massage Therapy

Why I Give: *"Because it's the smart thing to do. It's the kind thing to do. It changes peoples' lives FOREVER!"*

Leave A Legacy



"I have seen firsthand the impact that scholarships have on student success and I am always looking for ways to honor the love I have for my children. So, I endowed a scholarship in their name for GateWay's ACE Program and each time I give, this endowment grows."

- Dr. Joseph Swaba, GateWay Communication Faculty, created the Nicholas, Anjolia and Michah Swaba ACE Scholarship

Start Your Own Scholarship

Creating your legacy might be the most important thing you accomplish in your lifetime. However, a legacy is not just how you are remembered when you leave this Earth, it can be a living legacy that gets created and enhanced throughout your life.

For more information on how to start a scholarship contact Development Director [Ann Blatté](#).

These Are A Few Of Our Favorite Things

Recurring Gifts

A recurring gift by payroll withdrawal can make a larger gift over time! Think about this:

- A donation of \$2.08 per paycheck grows to \$50 per year.
- A gift of \$4.15 per paycheck equals \$100 a year.
- And a gift of \$10.41 adds up to \$250 per year!

GOOD TO KNOW: Recurring gifts are deducted over 24 pay periods, not 26. So, you will get two paychecks that do not include a GateWay Gives deduction.

Small Gifts

It doesn't take a lot to make a **BIG** difference! Often, our students reach out to us for help for things like food and transportation to class. A gift of just \$5 to our Student Emergency Fund can provide a student with lunch or a light rail pass.

Warm and Fuzzy Feelings

You'll get these knowing you are helping make a student's journey a little easier.





It's so easy to change someone's life!

JUST CLICK HERE

See below to designate where your donation can be used.

Scholarship and Student Support Funds

Healthcare

- Borze and Heying-Stanley Nursing Continuing Education Scholarship – 4380-1
- Colleen Doyle Memorial Scholarship for Medical Radiography – 4108-1
- GWCC Nuclear Medicine Fund – 4564-1
- Karen Gross Memorial Scholarship for Radiologic Technology – 5683
- Margaret R. Bergstein, R.N. Memorial Scholarship – 5283
- Mark Richard Memorial Scholarship for Nuclear Medicine – 5209
- Phillip M Burford Memorial Scholarship for Respiratory Care – 4647
- Healthcare United at GateWay (HUG Clinic) – 4316-1
- HUG Clinic Endowment – 5717
- Healthcare General Fund – 4950

Athletics

- GateWay Baseball – 4885
- Rahea Herman Memorial Scholarship for Athletics – 5668
- Jackson Weller Memorial Scholarship – 5719
- GWCC Athletics – 4923

Business / Technology

- Jim Baugh Math Lovers Endowed Scholarship – 5655
- Heidi and David Hutchins Scholarship for Business Majors – 5401
- Hye Tech Networks Technology Scholarship – 4405-1
- Phoenix Forge – 4312-1
- Joseph G. Vokoun, Jr. Memorial Scholarship for Environmental Science, Water and Occupational Safety – 4410-1
- Center for Entrepreneurial Innovation (CEI) – 4198-1

Trades

- Remijio Ontiveros Memorial Scholarship for Career and Technical Trades – 5636
- Southwest Skills Center Scholarship – 4375-1
- Dr. Hilda Villaverde Hairstylist Scholarship Endowment – 5663
- GWCC Clock Hour Trades Support Fund – 5133

Student Support Services

- Academic Support – 4933
- Children's Learning Center – 4064-1
- GateWay ACE Fund – 4346-1
- GateWay Early College High School – 4868
- GateWay Greatest Needs Fund – 4935
- Nicholas, Anjolia and Michah Swaba ACE Scholarship – 5277
- GateWay Student Emergency Fund – 4000-1
- Student Services Support – 4932

Thank You!

In closing, we leave you with this fun video

